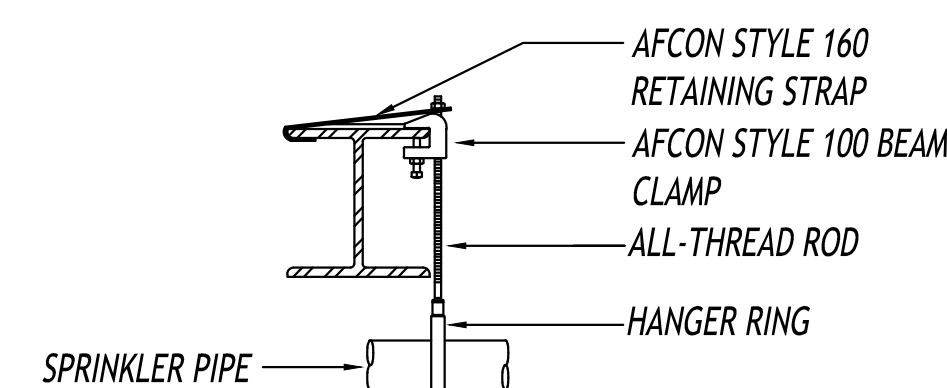
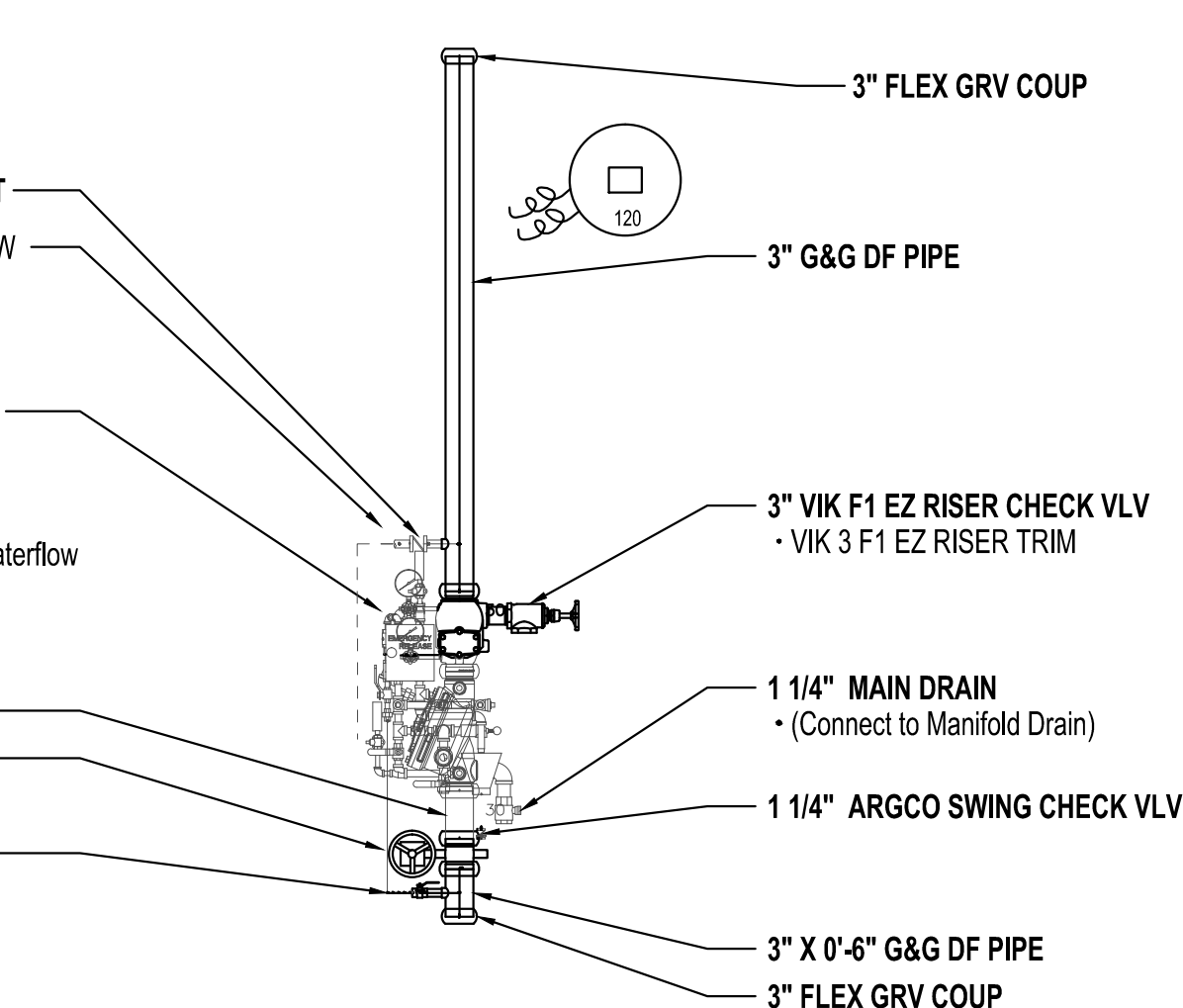
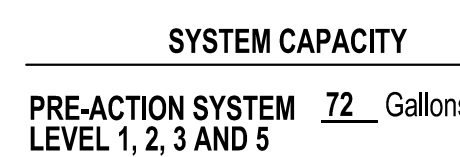
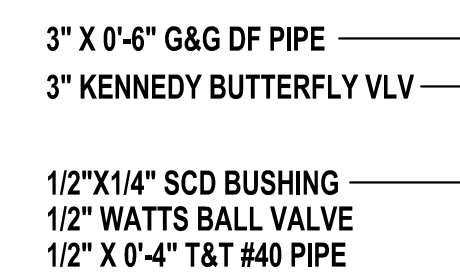
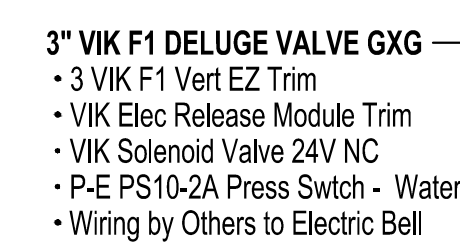
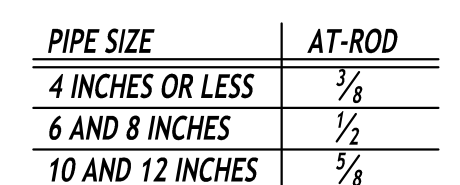
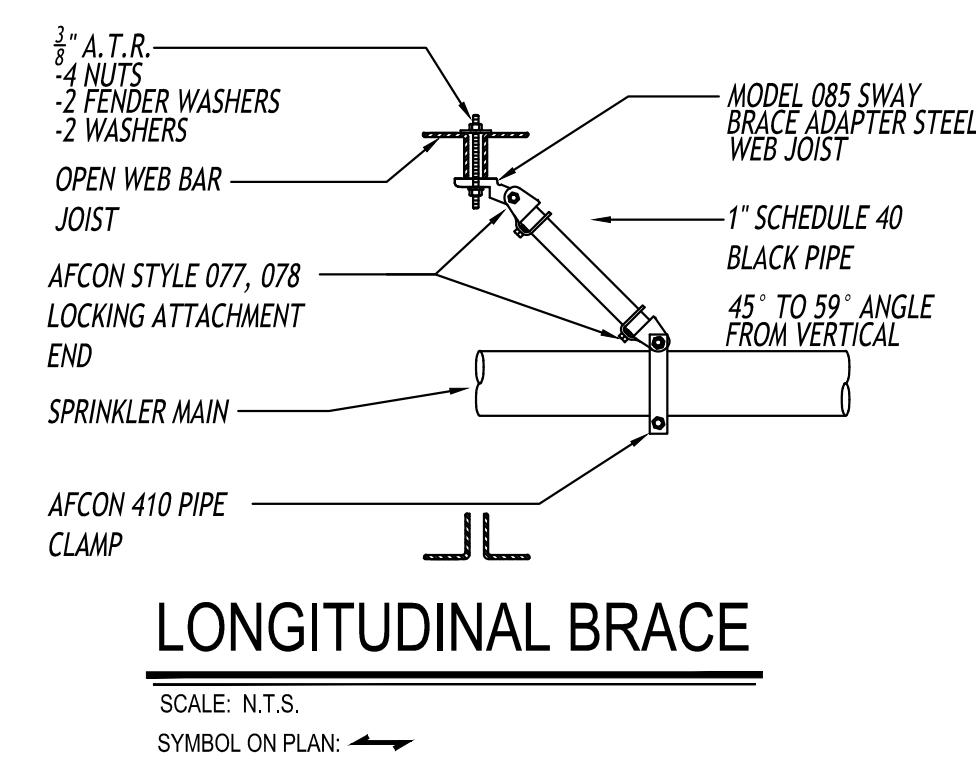
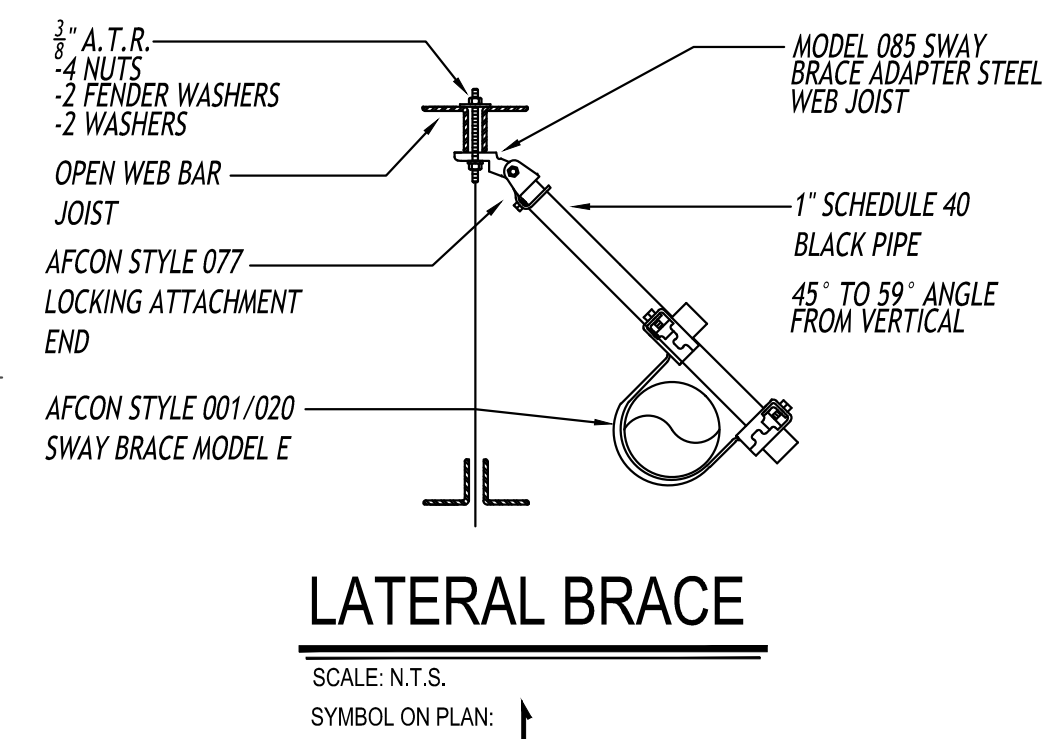
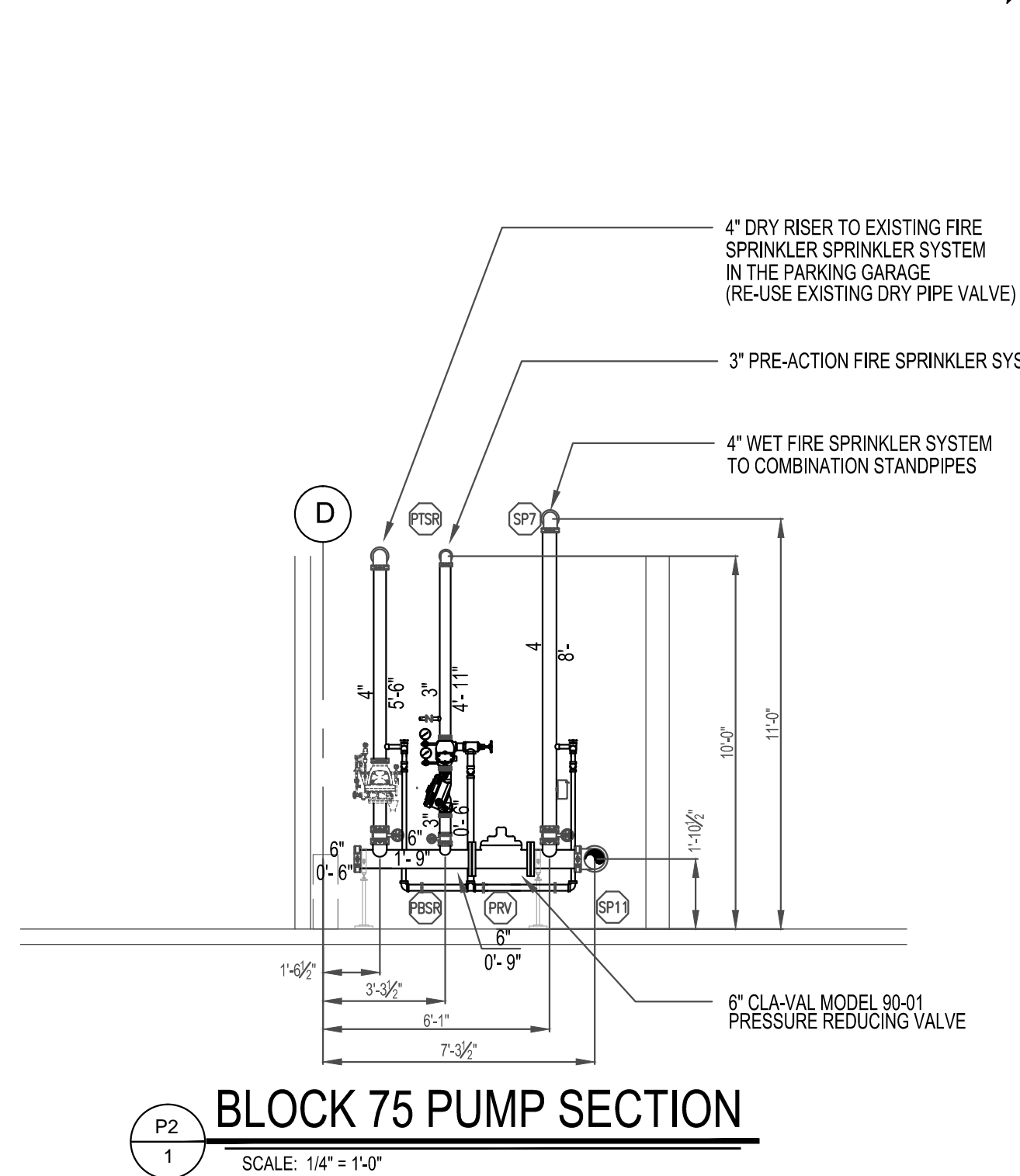
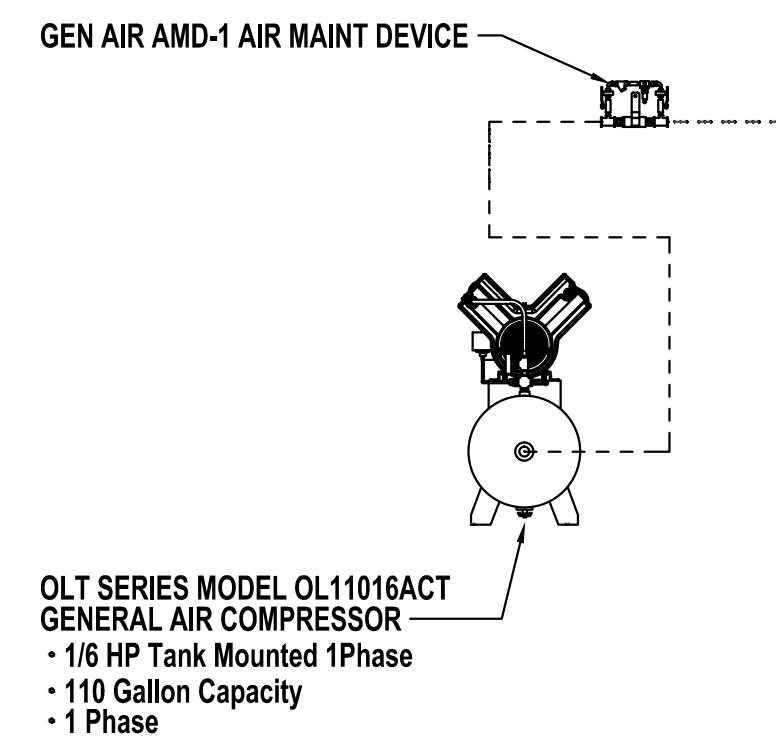
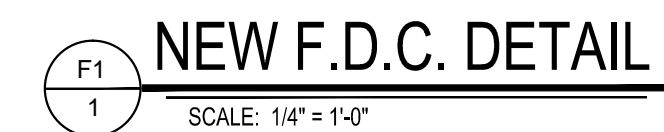


PLAZA 349 REMODEL - STANDPIPE
AUTOMATIC WET CLASS I
DENSITY - N/A
AREA PER SPRK - N/A
AREA OF SPRK OPER. - N/A
SPRINKLER K-FACTOR - N/A
ADJUSTED K-FACTOR - N/A
REQUIRED PSI @ - 85.062 PSI
REQUIRED GPM @ - 750 GPM
TOTAL SPRK IN REMOTE AREA - N/A



PIPE SIZE		DIAMETER OF ROD	
IN.	MM	IN.	MM
UP TO AND INCLUDING 4 IN.	100MM	3/8	9.5
5 IN., 6 IN., AND 8 IN.	125MM 150MM 200MM	1/2	12.7
10 IN. AND 12 IN.	250MM 300MM	5/8	15.9



OFFICE BUILDING - LEVEL 1, 2, 3, 4, 5 AND 6 SHALL BE DESIGNED FOR A LIGHT HAZARD OCCUPANCY WITH A DENSITY OF .10 OVER THE MOST REMOTE 1,500 SQUARE FEET.

- A. OFFICE SPACE: 225 SQ. FT.
B. STORAGE AREAS: 130 SQ. FT.
C. MECHANICAL EQUIPMENT ROOMS: 130 SQ. FT.
D. ELECTRICAL EQUIPMENT ROOMS: 130 SQ. FT.
E. OTHER AREAS: ACCORDING TO NFPA 13, 2007.
F. FUTURE FINISH AREAS: 100 SQ. FT. (SHELL SPACE)

PARKING GARAGE - EXISTING FIRE SPRINKLER SYSTEM SHALL REMAIN IN PLACE. THE EXTENTS OF WORK SHALL BE TO RE-ROUTE THE EXISTING FEED MAIN TO TIE INTO THE NEW FIRE PUMP. NEW PRV VALVE TO BE INSTALLED AND PRESSURE SET TO 100 PSI.

MAINTENANCE STAIR STANDPIPE - SHALL BE A CLASS I STAND
DESIGNED PER NFPA 14, WITH FLOOR CONTROL VALVE ASSEMBLY
WITH EXPRESS DRAIN AND PRESSURE REGULATING HOSE VALVE
ON THE MAIN LANDINGS

PUBLIC STAIR STANDPIPE - IS A EXISTING CLASS I STANDPIPE THAT SHALL REMAIN IN PLACE. THE EXTENTS OF WORK SHALL BE TO RE-ROUTE THE EXISTING FEED MAIN TO TIE INTO THE NEW FIRE PUMP. NEW 2 1/2" PRV HOSE VALVES SHALL REPLACE THE EXISTING 2 1/2" HOSE VALVES.

1. UNDERGROUND SUPPLY LINE FROM SUPPLY SOURCE TO FIRST FLANGE ABOVE FINISHED FLOOR.
2. FLUSHING AND TESTING OF WORK INSTALLED BY OTHERS.
3. KNOX LOCKING TYPE FDC CAPS.
4. ELECTRICAL WIRING OF ANY TYPE.
5. PAINTING AND/OR LABELING OF FIRE SPRINKLER PIPING.
6. FIREPROOFING OR CAULKING OF FIRE SPRINKLER PIPE.
7. FIRE PUMP HOUSE KEEPING PAD.
8. REMOVAL OR DEMO OF BRICK WORK FOR THE NEW F.D.C.
8. FIRE EXTINGUISHERS OR CABINETS.
9. OVERTIME WORK BEYOND CERTIFIED FIRE PROTECTION'S NORMAL WORKING HOURS.

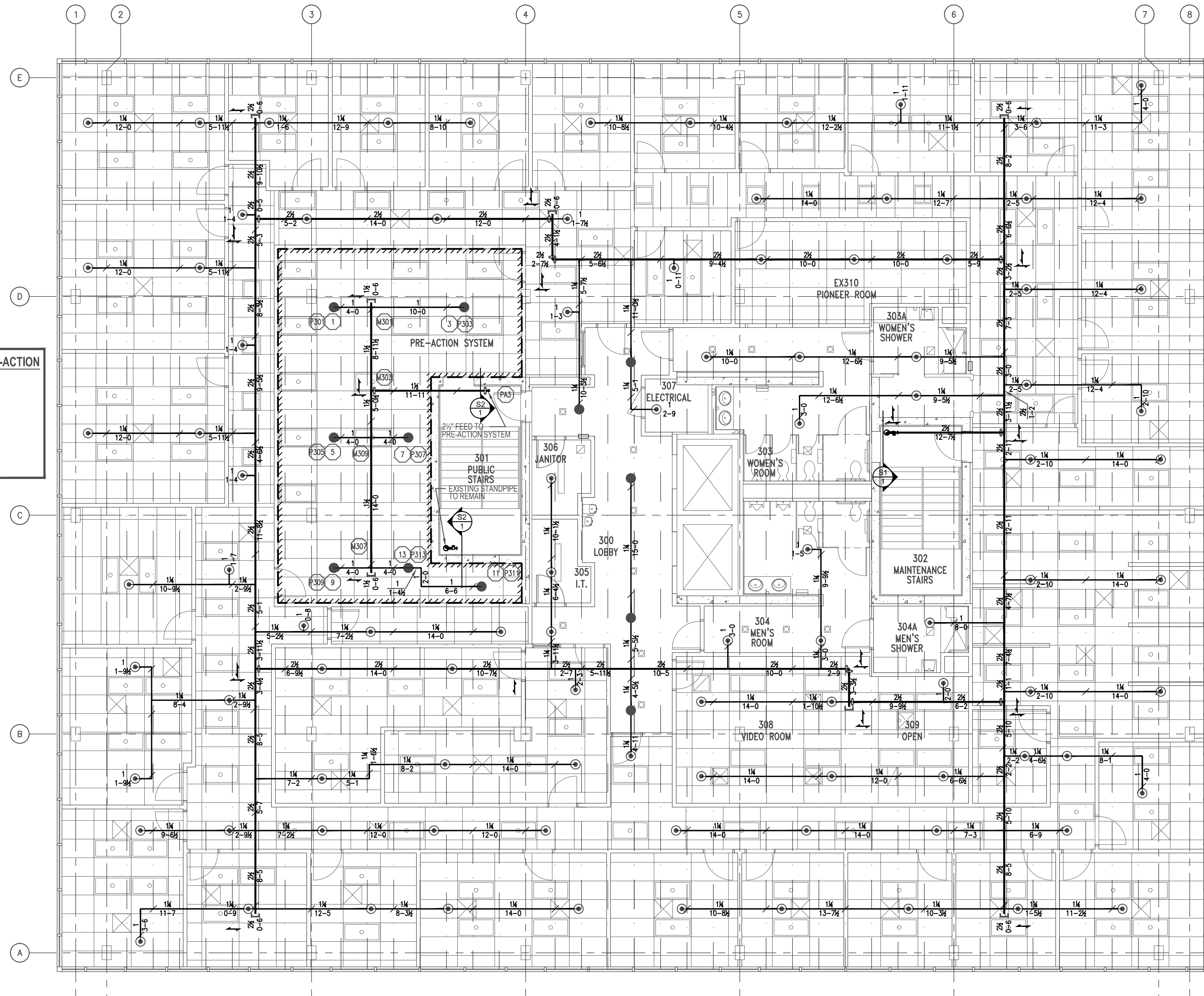
DESIGNED PER NFPA 13, 2007 EDITION
DESIGNED PER SPEC SECTION 21 1000

SHEET 1: TITLE AND DEATAIL PAGE
SHEET 2: DEMO AND STANDPIPE FEED MAIN PLAN
SHEET 3: LEVEL 1 AND 2 FIRE PROTECTION PLAN
SHEET 4: LEVEL 3 AND 4 FIRE PROTECTION PLAN
SHEET 5: LEVEL 5 AND 6 FIRE PROTECTION PLAN

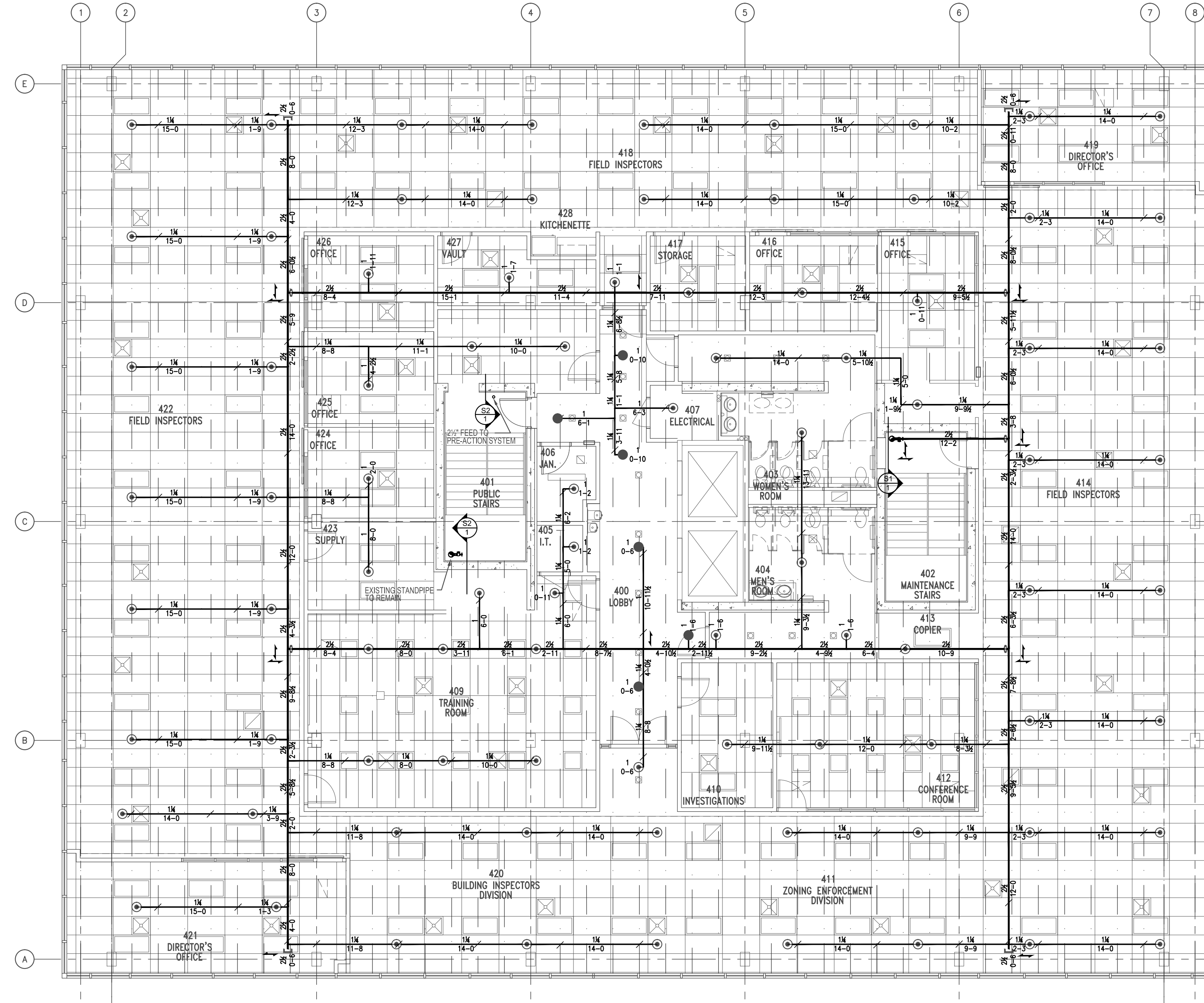


LEVEL 2 FIRE PROTECTION PLAN

REMOTE AREA #3
PLAZA 349 REMODEL - Level 3 PRE-ACTION
LIGHT HAZARD
DENSITY - 10 GPM / Entire Room SQ. FT.
AREA PER SPRK - 225 SQ. FT.
AREA OF SPRK OPEN - Entire Room SQ. FT.
SPRINKLER K-FACTOR - 5.6
ADJUSTED K-FACTOR - N/A
REQUIRED PSI - 60.355 PSI
REQUIRED GPM - 283.079 GPM
TOTAL SPRK IN REMOTE AREA - 07



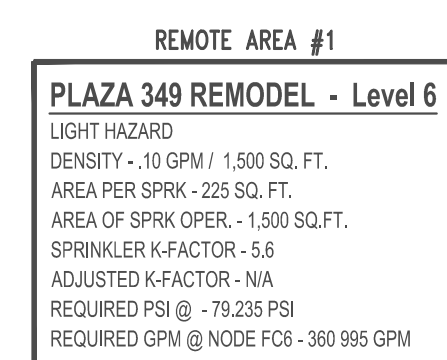
LEVEL 3 FIRE PROTECTION PLAN
SCALE: 1/8" = 1'-0"



LEVEL 4 FIRE PROTECTION PLAN
SCALE: 1/8" = 1'-0"



SCALE: 1/8" = 1'-0"



LEVEL 6 FIRE PROTECTION PLAN

SCALE: 1/8" = 1'-0"